



GLOBAL ASPIRE

AN ENGINEERING PROCUREMENT COMPANY

Company Profile



- **Established in 2011 in the UK as a registered entity with an ambitious plan of operating globally**
- **Member of the UK Chamber of Commerce**
- **We serve Oil & Gas, Petro Chemical, Marine, Mining, Power, Paper , Steel and Construction industries**



Why Global Aspire?



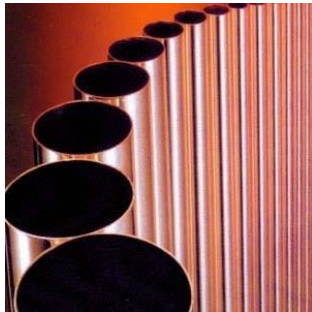
- **Trusted Procurement and Engineering Service Provider**
- **Offers blend of outsourcing and consultancy**
- **Act as an extension of your current team**
- **Understands your requirements and focus on your business needs**
- **Commit to what we deliver and deliver what we commit**
- **Cost and time efficient**
- **Offers variety of solutions to enhance your performance**



Benefits of using Global Aspire



- We are notable for our technical competence ,negotiation and purchasing capabilities.
- Further reduction in your cost.
- Technical assistance.
- Reduction in headcount, training, office space and computerisation.



Industries we serve



- Marine
- Mining
- Oil & Gas
- Petrochemical
- Pulp and Paper
- Steel
- Agriculture

Products



Pipes



Fittings



Valves



Flanges & Pumps



Electrical Transmission



Pipeline Equipment



Welding Products



Bearings



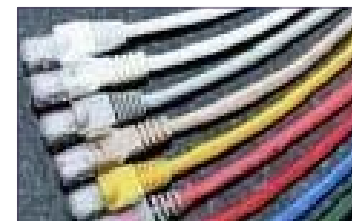
Industrial & Hydraulic



Hose



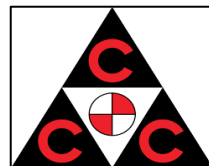
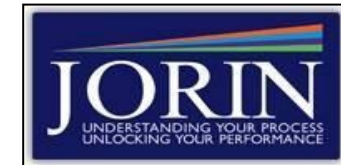
Safety Products



Cables



Our Major Clientele



Design and Detailed Engineering



DESIGN ENGINEERING

- **Feasibility studies**
- **Conceptual Studies**
- **SELECT/Pre-Feed Engineering**
- **Basic Engineering**
- **Front End Engineering Design**
- **Detail Engineering Design**
- **Pre-bid Engineering**
- **Validation Engineering**
- **Specialist Services for equipment, Package Design,**
- **Drafting Supports – Smart Plant P&ID development, As-built drawing preparation**



DETAILED ENGINEERING

PIPING AND LAYOUT

- Design basis and Review of plot plan
- Updating piping specification.
- Pipe wall thickness calculation
- Piping study / Piping layout
- Nozzle orientation drawings
- Isometric Preparation/Checking
- Support Design / Support Layout
- Material Take Off (M.T.O.)
- Stress analysis and 3D modelling
- Equipment / Piping modelling
- Support marking
- AIV/FIV Analysis

Structural Steel Design and Detailing

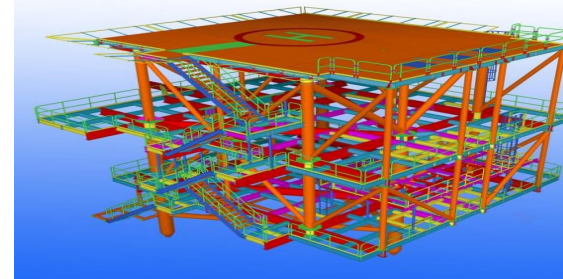
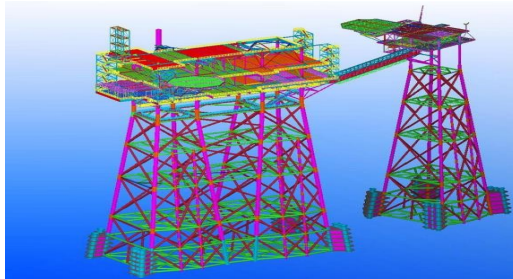
Tekla Structural Steel Detailing	Structural 3D Modelling
Shop/Fabrication Drawings	Miscellaneous Steel Drawings, Stairs, Ladders, Trusses, Conveyors and Guardrails/Handrails
ABM's, Shop Bolt Lists, Field Bolt Lists, Material Summary, and Gather Sheets for convenience in the fabrication and erection process	3D SMART Model migration between different design modelling software such as PDMS, TEKLA, PDS
Creating and checking As-Built models using intelligent 3D laser-scanned models provided by clients	2D Drafting and 3D Modelling
Steel Estimation (MTO)	Commercial, Industrial Structures
Steel Connection Design	Advance Design Steel Connections (ADSC)

Structural Steel Design and Detailing

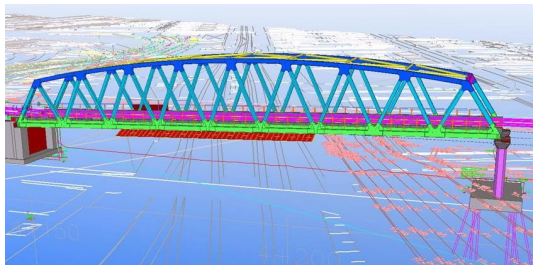


SPECIAL STRUCTURES

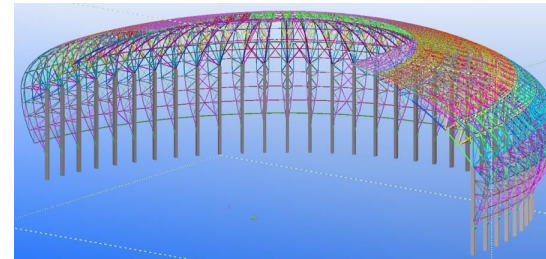
Offshore Platforms



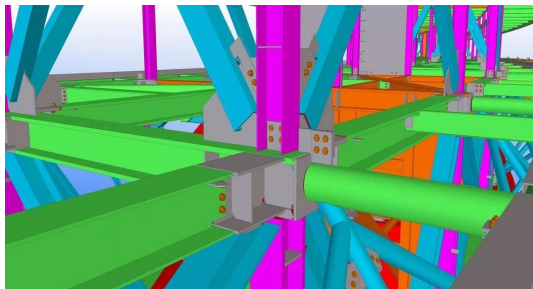
Bridges



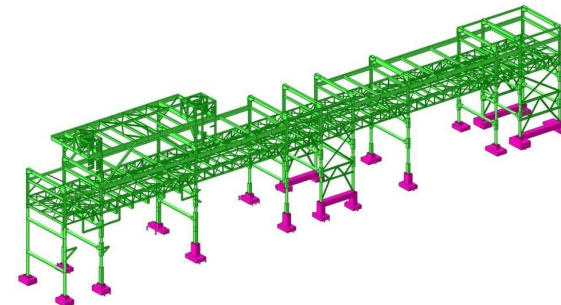
Stadiums



Tekla Model Connection Details



Piperack Model - 3D Structures



Thank You



Global Aspire Ltd

Head office

3 Caris brooke gardens
Leicester
LE2 3PR
United Kingdom
Mob: 0044 7863559735
Phone: 0044 116 2920121

Operation Centre

B6 Sukesh Apartment
17/9 Ayyasamy Street
Nehru Nagar
Chrompet
Chennai -44
India

Email: sales@globalaspire.com

Web: www.globalaspire.com